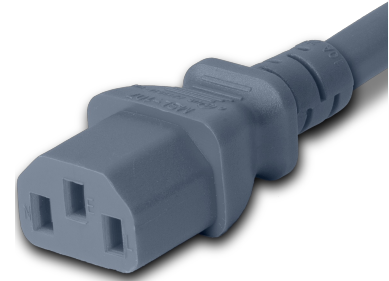


2013-H-048-GRY

4FT Gray Standard IEC320 C20 to IEC320 C13 15A 250V



SPECIFICATIONS

Attribute	Value
Product Weight	~0.5 lbs.
Shipping Volume	~39.78 in ³
Length	4 Feet
Current (Amps)	15 Amps
Voltage (Volts)	250 volts
Connector (Female)	IEC 60320 C13
Plug (Male)	IEC 60320 C20
Cordage	14awg-3c SJT
Certifications	RoHS, REACH
Color	Gray
Approvals	UL, cUL

COUNTRIES OF APPLICATION

COUNTRY	RELEVANT APPROVAL	COUNTRY	RELEVANT APPROVAL
United States	UL	Mexico	UL
Canada	cUL		

PRODUCT GRAPHIC



United States : East

+1 860-763-2100

sales@worldcordsets.com

210 Moody Road, Enfield, CT, 06082