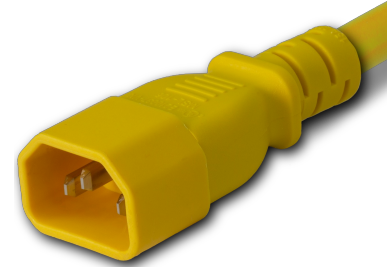


1419-H-072-YEL

6FT Yellow Standard IEC320 C14 to IEC320 C19 15A 250V



SPECIFICATIONS

Attribute	Value
Product Weight	~0.7 lbs.
Shipping Volume	~49 in ³
Length	6 Feet
Current (Amps)	15 Amps
Voltage (Volts)	250 volts
Connector (Female)	IEC 60320 C19
Plug (Male)	IEC 60320 C14
Cordage	14awg-3c SJT
Approvals	UL, cUL
Certifications	RoHS, REACH
Color	Yellow

COUNTRIES OF APPLICATION

COUNTRY	RELEVANT APPROVAL	COUNTRY	RELEVANT APPROVAL
---------	-------------------	---------	-------------------

United States : East

+1 860-763-2100

sales@worldcordsets.com

210 Moody Road, Enfield, CT, 06082