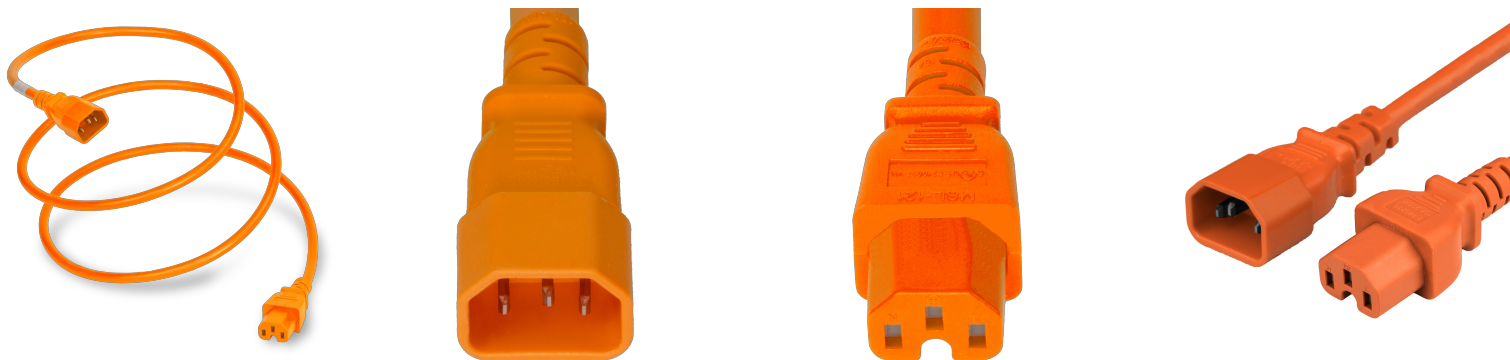


**1415-H-012-ORG**




1FT Orange High Temp IEC320 C14 to IEC320 C15 15A 250V



**SPECIFICATIONS**

Attribute	Value
Product Weight	~0.19 lbs.
Shipping Volume	~9.95 in <sup>3</sup>
Length	1 Foot
Current (Amps)	15 Amps
Voltage (Volts)	250 volts
Connector (Female)	IEC 60320 C15
Plug (Male)	IEC 60320 C14
Cordage	14awg-3c SJT
Color	Orange
Approvals	UL , cUL
Certifications	RoHS , REACH

**COUNTRIES OF APPLICATION**

COUNTRY	RELEVANT APPROVAL	COUNTRY	RELEVANT APPROVAL
United States	 UL	Mexico	 UL
Canada	 cUL		

**United States : East**

+1 860-763-2100

sales@worldcordsets.com

210 Moody Road, Enfield, CT, 06082



CAGE Code: 5EV78  
PO Box 1111, Enfield, CT, 06083, USA  
(860) 763-2100  
orders@worldcordsets.com

## DATASHEET

Last updated on  
May 6, 2025

### United States : East

+1 860-763-2100

sales@worldcordsets.com

210 Moody Road, Enfield, CT, 06082