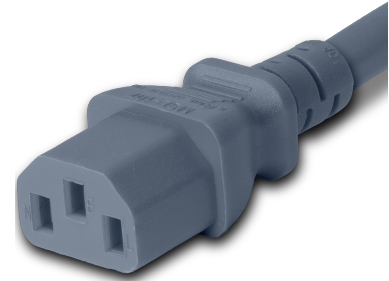


2013-H-120-GRY

10FT Gray Standard IEC320 C20 to IEC320 C13 15A 250V



SPECIFICATIONS

| Attribute | Value |
|--------------------|------------------------|
| Product Weight | ~1.11 lbs. |
| Shipping Volume | ~56.83 in ³ |
| Length | 10 Feet |
| Current (Amps) | 15 Amps |
| Voltage (Volts) | 250 volts |
| Connector (Female) | IEC 60320 C13 |
| Plug (Male) | IEC 60320 C20 |
| Cordage | 14awg-3c SJT |
| Certifications | RoHS, REACH |
| Color | Gray |
| Approvals | UL, cUL |

COUNTRIES OF APPLICATION

| COUNTRY | RELEVANT APPROVAL | COUNTRY | RELEVANT APPROVAL |
|---------------|-------------------|---------|-------------------|
| United States | UL | Mexico | UL |
| Canada | cUL | | |

PRODUCT GRAPHIC



United States : East

+1 860-763-2100

sales@worldcordsets.com

210 Moody Road, Enfield, CT, 06082