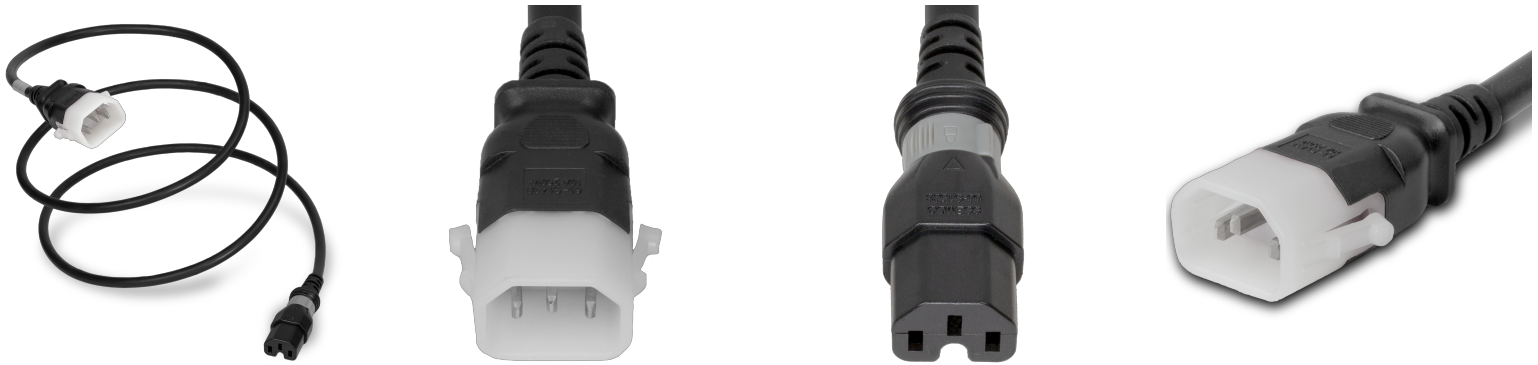





DL1415-H-120

10FT Black Dual Lock IEC320 C14 Secure-Locking to IEC320 C15 Universal Locking 15A 250V



SPECIFICATIONS	
Attribute	Value
Product Weight	~1.2 lbs.
Shipping Volume	~120 in ³
Connector (Female)	S-Lock C15
Plug (Male)	IEC 60320 C14 Locking (P-Lock)
Cordage	14awg-3c SJT
Color	Black
Voltage (Volts)	250 volts
Current (Amps)	15 Amps
Approvals	UL , cUL
Certifications	RoHS , REACH
Length	10 Feet , 10 Feet

COUNTRIES OF APPLICATION			
COUNTRY	RELEVANT APPROVAL	COUNTRY	RELEVANT APPROVAL
United States	 UL	Mexico	 UL
Canada	 cUL		