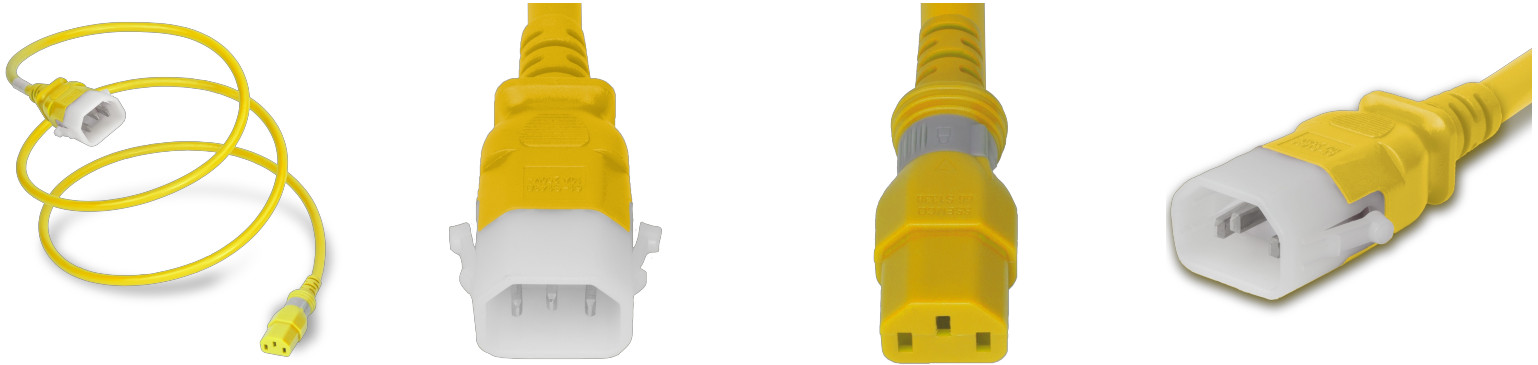





**DL1413-F-096-YEL**

P-Lock C14 to S-Lock C13, 18 AWG SVT, 10A/250V, 8FT Yellow Dual-Lock Power Cord



SPECIFICATIONS	
Attribute	Value
Product Weight	~0.47 lbs.
Shipping Volume	~47 in <sup>3</sup>
Plug (Male)	IEC 60320 C14 Locking (P-Lock)
Connector (Female)	IEC 60320 C13 S-Lock (Universal Locking)
Current (Amps)	10 Amps
Voltage (Volts)	250 volts
Color	Yellow
Approvals	UL , cUL
Certifications	RoHS , REACH

COUNTRIES OF APPLICATION			
COUNTRY	RELEVANT APPROVAL	COUNTRY	RELEVANT APPROVAL
United States	 UL	Mexico	 UL
Canada	 cUL		