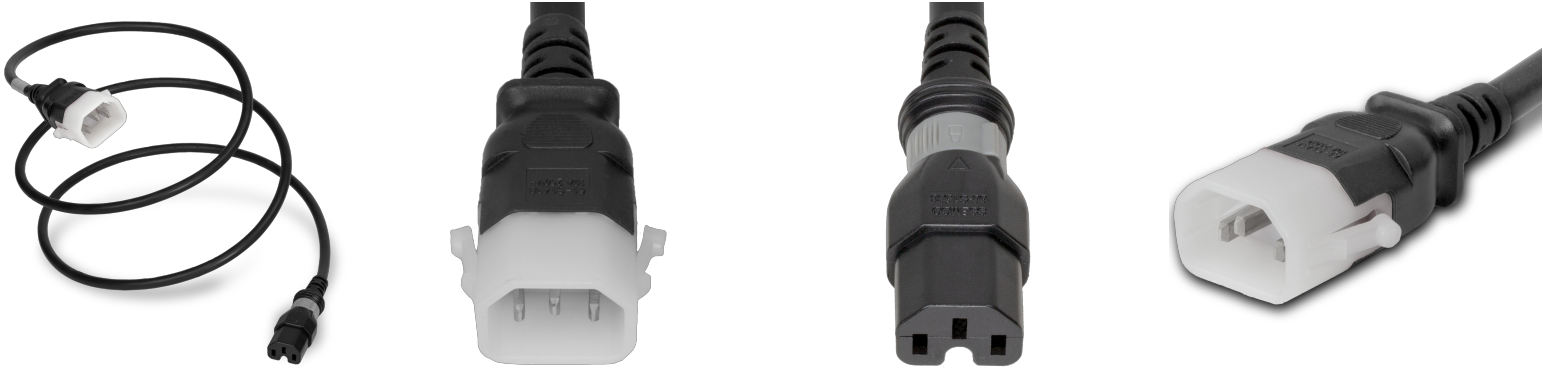


DL1415-H-144

12FT Black Dual Lock IEC320 C14 Secure-Locking to IEC320 C15 Universal Locking 15A 250V



SPECIFICATIONS

Attribute	Value
Product Weight	~1.5 lbs.
Shipping Volume	~150 in ³
Plug (Male)	IEC 60320 C14 Locking (P-Lock)
Connector (Female)	S-Lock C15
Current (Amps)	15 Amps
Color	Black
Cordage	14awg-3c SJT
Length	12 Feet
Approvals	UL , cUL
Certifications	RoHS , REACH
Voltage (Volts)	250 volts

COUNTRIES OF APPLICATION

COUNTRY	RELEVANT APPROVAL	COUNTRY	RELEVANT APPROVAL
United States	UL	Mexico	UL
Canada	cUL		

United States : East

+1 860-763-2100

sales@worldcordsets.com

210 Moody Road, Enfield, CT, 06082