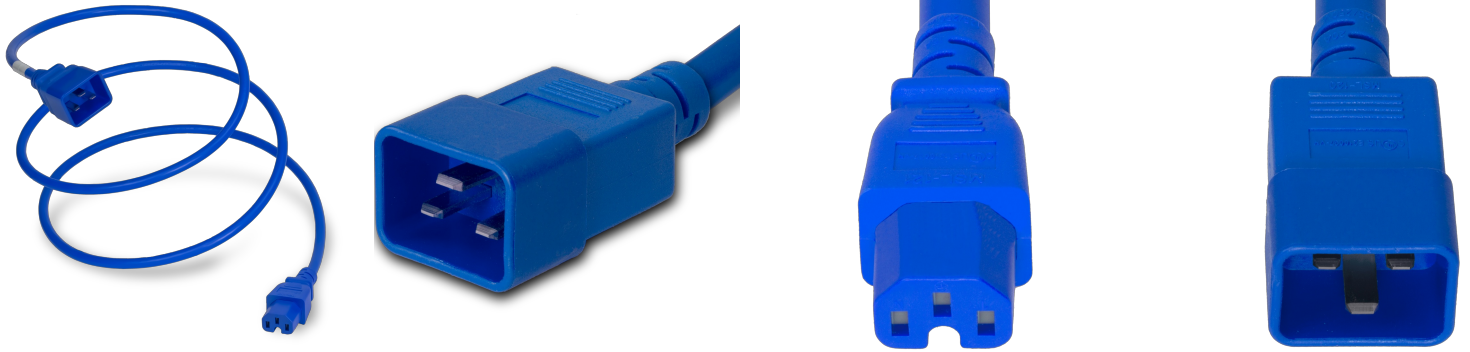


**2015-H-096-BLU**

8FT Blue High Temp IEC320 C20 to IEC320 C15 15A 250V



**SPECIFICATIONS**

Attribute	Value
Product Weight	~0.92 lbs.
Shipping Volume	~90 in <sup>3</sup>
Plug (Male)	IEC 60320 C20
Connector (Female)	IEC 60320 C15
Length	8 Feet
Color	Blue
Cordage	14awg-3c SJT
Current (Amps)	15 Amps
Voltage (Volts)	250 volts

**COUNTRIES OF APPLICATION**

COUNTRY	RELEVANT APPROVAL	COUNTRY	RELEVANT APPROVAL
---------	-------------------	---------	-------------------