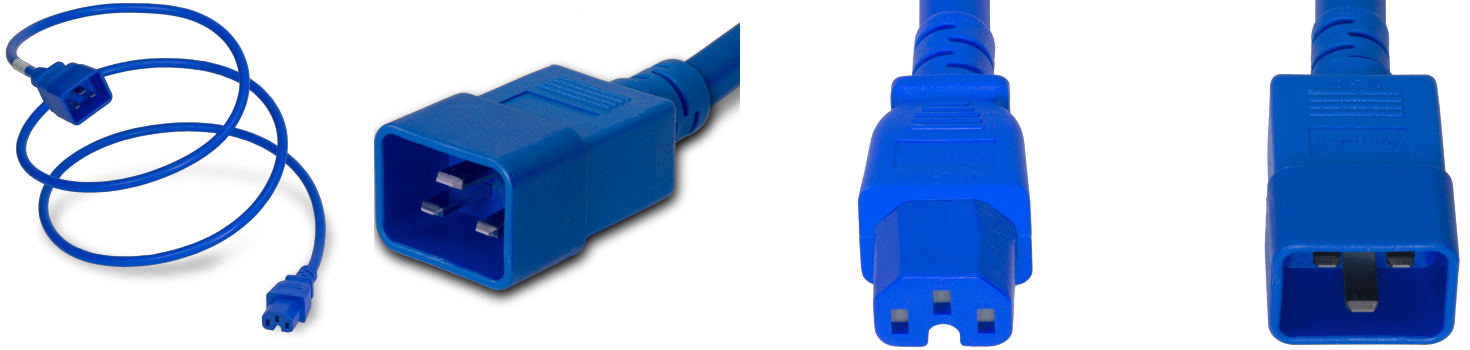


2015-H-036-BLU

3FT Blue High Temp IEC320 C20 to IEC320 C15 15A 250V



SPECIFICATIONS

Attribute	Value
Product Weight	~0.43 lbs.
Shipping Volume	~40 in ³
Plug (Male)	IEC 60320 C20
Connector (Female)	IEC 60320 C15
Cordage	14awg-3c SJT
Length	3 Feet
Color	Blue
Current (Amps)	15 Amps
Voltage (Volts)	250 volts

COUNTRIES OF APPLICATION

COUNTRY	RELEVANT APPROVAL	COUNTRY	RELEVANT APPROVAL
---------	-------------------	---------	-------------------