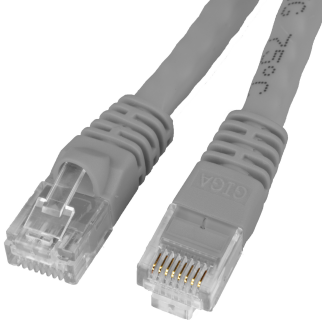


4545U.6a0600.2B

Unshielded Cat6a Gray Ethernet Patch Cable, Snagless/Molded Boot, 500 MHz, 50 foot



SPECIFICATIONS

| Attribute | Value |
|-------------------|------------------------|
| Product Weight | ~1.4 lbs. |
| Shipping Volume | ~814.3 in ³ |
| Length | 50 Feet |
| Diameter (Inches) | 0.24 |
| Wire | 26 AWG |
| Cable End 2 | Cat6a Male Plug |
| Cable End 1 | Cat6a Male Plug |

COUNTRIES OF APPLICATION

| COUNTRY | RELEVANT APPROVAL | COUNTRY | RELEVANT APPROVAL |
|---------|-------------------|---------|-------------------|
|---------|-------------------|---------|-------------------|

United States : East

+1 860-763-2100

sales@worldcordsets.com

210 Moody Road, Enfield, CT, 06082