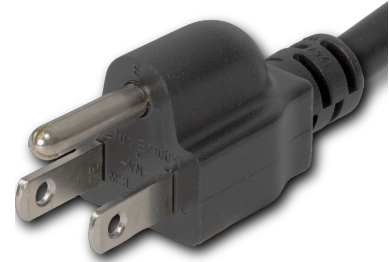


51515-H-120
 10FT Black Standard NEMA 5-15P to IEC320 C15 15A 125V



SPECIFICATIONS

Attribute	Value
Product Weight	~1.05 lbs.
Shipping Volume	~100 in ³
Length	10 Feet
Current (Amps)	15 Amps
Voltage (Volts)	125 volts
Connector (Female)	IEC 60320 C15
Cordage	14awg-3c SJT
Color	Black
Plug (Male)	NEMA 5-15P
Certifications	RoHS, REACH
Approvals	UL, cUL

COUNTRIES OF APPLICATION

COUNTRY	RELEVANT APPROVAL	COUNTRY	RELEVANT APPROVAL
United States	UL	Mexico	UL
Canada	cUL		

PRODUCT GRAPHIC



United States : East

+1 860-763-2100

sales@worldcordsets.com

210 Moody Road, Enfield, CT, 06082