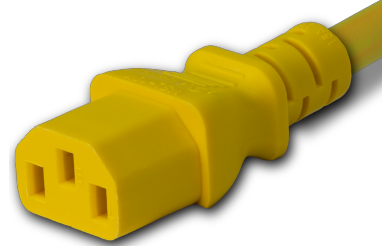
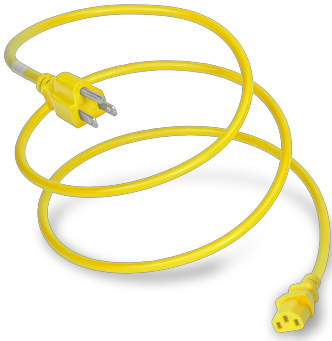


51513-H-024-YEL
 2FT Yellow Standard NEMA 5-15P to IEC320 C13 15A 125V



SPECIFICATIONS

Attribute	Value
Product Weight	~0.3 lbs.
Shipping Volume	~20 in ³
Length	2 Feet
Current (Amps)	15 Amps
Voltage (Volts)	125 volts
Connector (Female)	IEC 60320 C13
Plug (Male)	NEMA 5-15P
Cordage	14awg-3c SJT
Color	Yellow

COUNTRIES OF APPLICATION

COUNTRY	RELEVANT APPROVAL	COUNTRY	RELEVANT APPROVAL
---------	-------------------	---------	-------------------