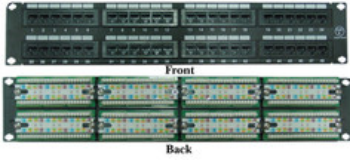


**NIPP-CAT6-48**

Rackmount 48 Port Cat6 Patch Panel, Horizontal, 110 Type, 568A & 568B Compatible, 2U



**SPECIFICATIONS**

Attribute	Value
Product Weight	~2.8 lbs.
Shipping Volume	~532 in <sup>3</sup>
# of Ports	48

**COUNTRIES OF APPLICATION**

COUNTRY	RELEVANT APPROVAL	COUNTRY	RELEVANT APPROVAL
---------	-------------------	---------	-------------------

**United States : East**

+1 860-763-2100

sales@worldcordsets.com

210 Moody Road, Enfield, CT, 06082