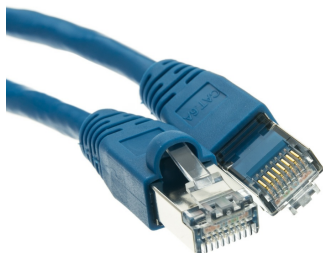


4545S.6a1200.4B

Shielded Cat6a Blue Ethernet Patch Cable, Snagless/Molded Boot, 500 MHz, 100 foot



SPECIFICATIONS

Attribute	Value
Product Weight	~2.45 lbs.
Shipping Volume	~1600 in ³
Diameter (Inches)	0.24
Shield Type	Foil
Wire	26 AWG
Cable End 2	Cat6a Male Plug
Cable End 1	Cat6a Male Plug
Color	Blue
Length	100 Feet

COUNTRIES OF APPLICATION

COUNTRY	RELEVANT APPROVAL	COUNTRY	RELEVANT APPROVAL
---------	-------------------	---------	-------------------

United States : East

+1 860-763-2100

sales@worldcordsets.com

210 Moody Road, Enfield, CT, 06082