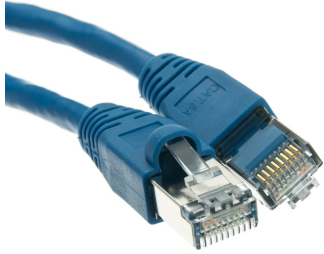


4545S.6a0036.4B

Shielded Cat6a Blue Ethernet Patch Cable, Snagless/Molded Boot, 500 MHz, 3 foot



SPECIFICATIONS

Attribute	Value
Product Weight	~0.1 lbs.
Shipping Volume	~48.86 in ³
Length	3 Feet
Diameter (Inches)	0.24
Shield Type	Foil
Wire	26 AWG
Cable End 2	Cat6a Male Plug
Cable End 1	Cat6a Male Plug
Color	Blue

COUNTRIES OF APPLICATION

COUNTRY	RELEVANT APPROVAL	COUNTRY	RELEVANT APPROVAL
---------	-------------------	---------	-------------------

United States : East

+1 860-763-2100

sales@worldcordsets.com

210 Moody Road, Enfield, CT, 06082