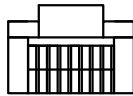
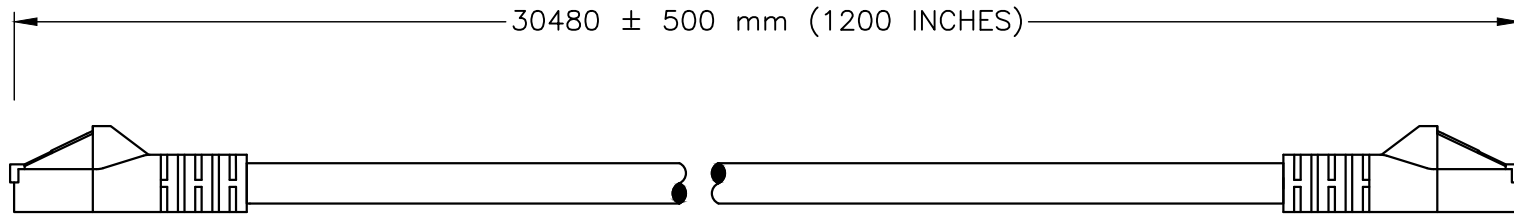
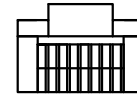


CERTIFICATIONS

ROHS



CAT5E MALE PLUG



CAT5E MALE PLUG

SPECIFICATIONS:

- 1. OVERALL LENGTH: 100 FEET
- 2. WIRE: 24 AWG
- 3. SHIELD TYPE: UNSHIELDED
- 4. CABLE END 1: CAT5E MALE PLUG
- 5. CABLE END 2: CAT5E MALE PLUG
- 6. DIAMETER: 0.217 INCHES
- 7. WEIGHT: 2.45 LBS / 1.11 Kg
- 8. COLOR: RED
- 9. MISCELLANEOUS:

ALL DIMENSIONS ARE IN MILLIMETERS

WORLD CORD SETS, INC.

TEL (860)763-2100
FAX (860)763-1183



www.WorldCordSets.com
sales@WorldCordSets.com

TITLE
CAT5e RED ETHERNET PATCH CABLE, SNAGLESS/MOLDED

THIS DOCUMENT AND THE INFORMATION CONTAINED HEREIN ARE THE PROPRIETARY CONFIDENTIAL PROPERTY OF WORLD CORD SETS. NO USE OR REPRODUCTION IN PART OR WHOLE MAY BE MADE WITHOUT WRITTEN PERMISSION FROM WORLD CORD SETS.

SCALE NONE	DATE 06-13-2018	PART NO. 4545U.51200.5B	REV —
---------------	--------------------	-----------------------------------	----------